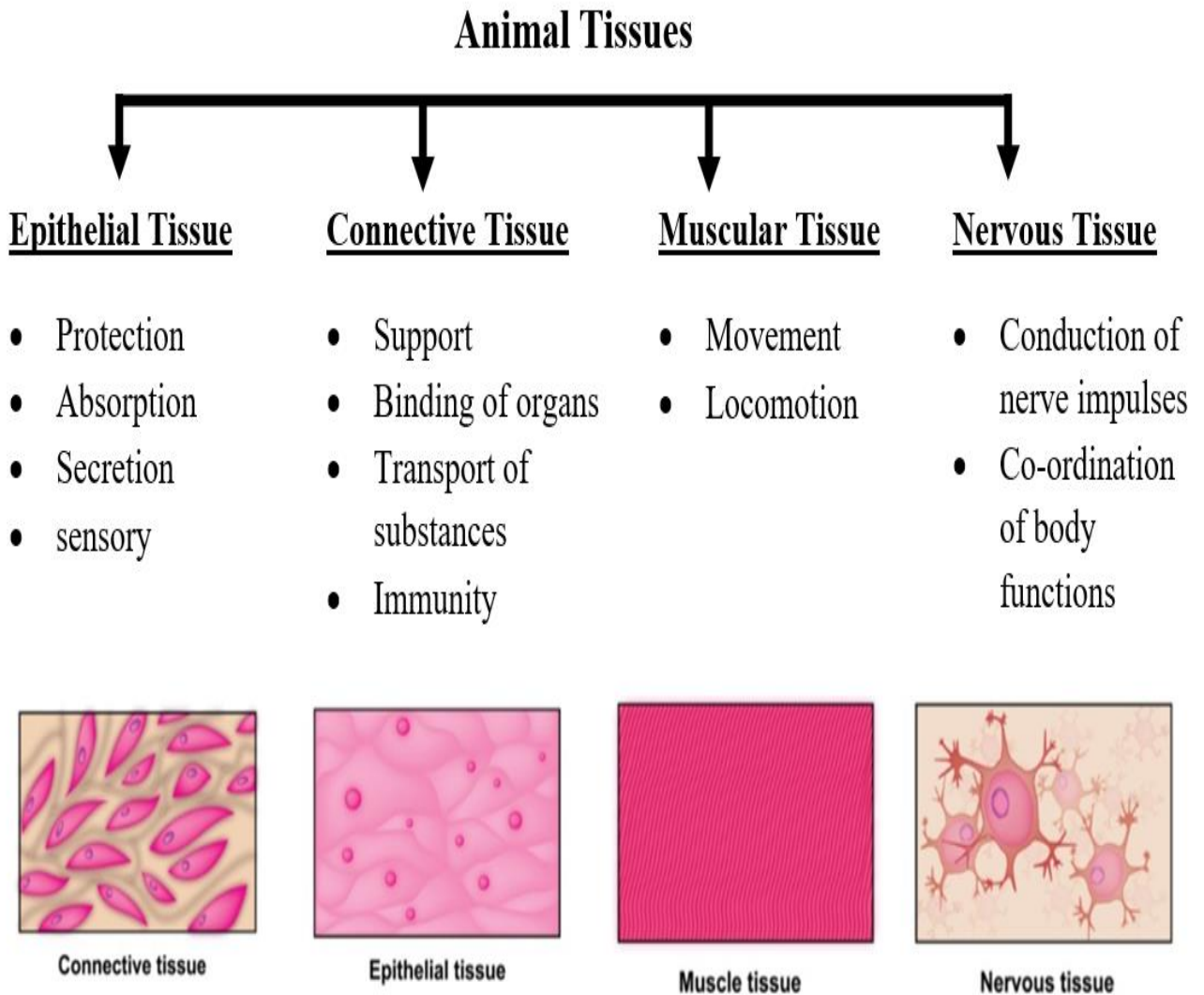


Animal Tissues

All complex animals consist of only four types of cells. These cell types vary in structure according to their function. The basic classification of animal tissues is as follows:

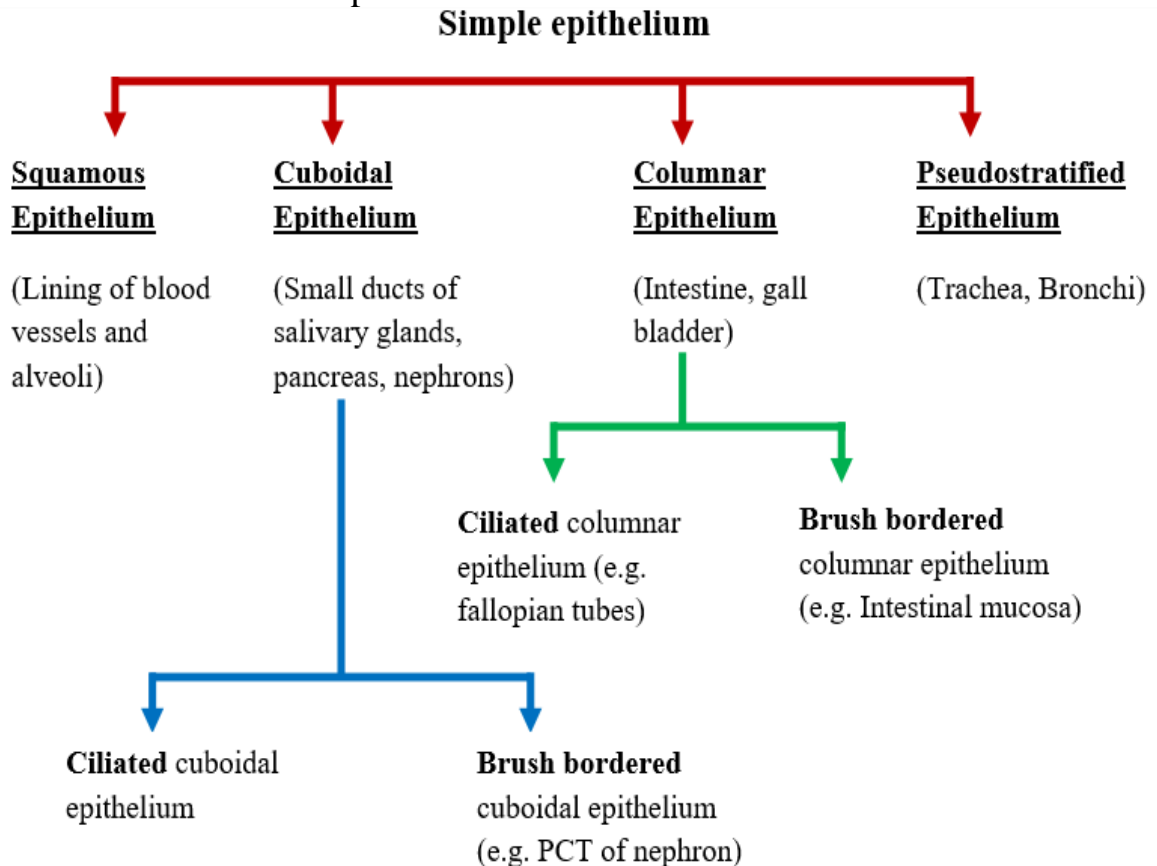


EPITHELIAL TISSUE

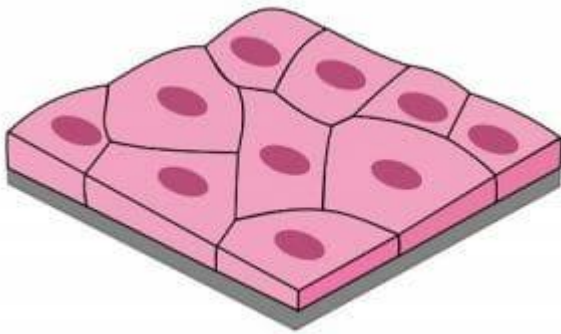
- There are two types of epithelial tissues:
- **Simple** Epithelium and **Compound** Epithelium.

Simple Epithelium

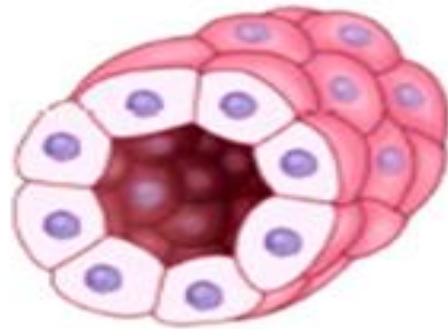
- It is usually composed of a **single layer of cells**.
- They are found in the lining of body cavities, ducts and tubes.
- simple epithelium is divided into:
 - **Squamous** epithelium
 - **Cuboidal** epithelium
 - **Columnar** epithelium
 - **Pseudo-stratified** epithelium



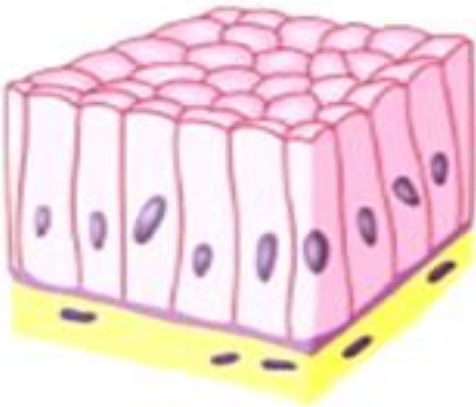
Squamous Epithelium



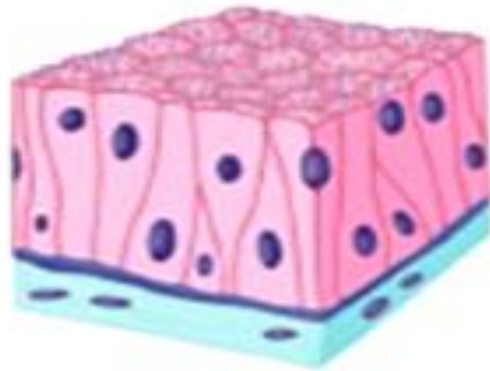
Cuboidal Epithelium



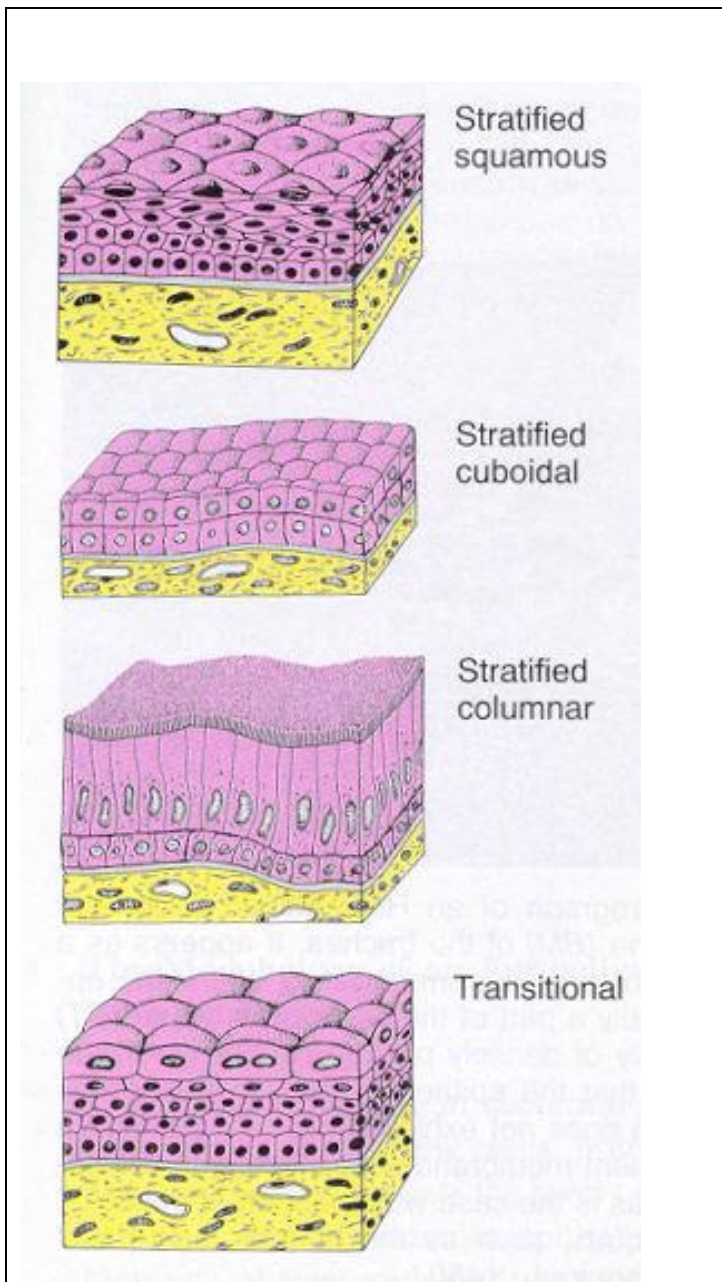
Columnar Epithelium



Pseudostratified Epithelium

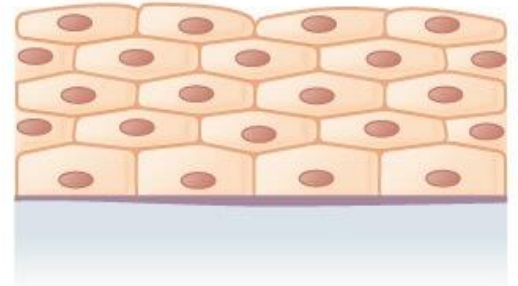


STRATIFIED EPITHELIUM: A stratified epithelium consists of several layers of cells



Stratified squamous –

- non-keratinised (mouth cavity,)
- keratinised (epidermis of the skin)



Stratified squamous epithelium

Stratified columnar –

Transitional -(urinary bladder).

Connective tissue


types of connective tissues:

1. Connective tissue proper

a. loose connective tissue

- **Areolar**
- Reticular
- Adipose

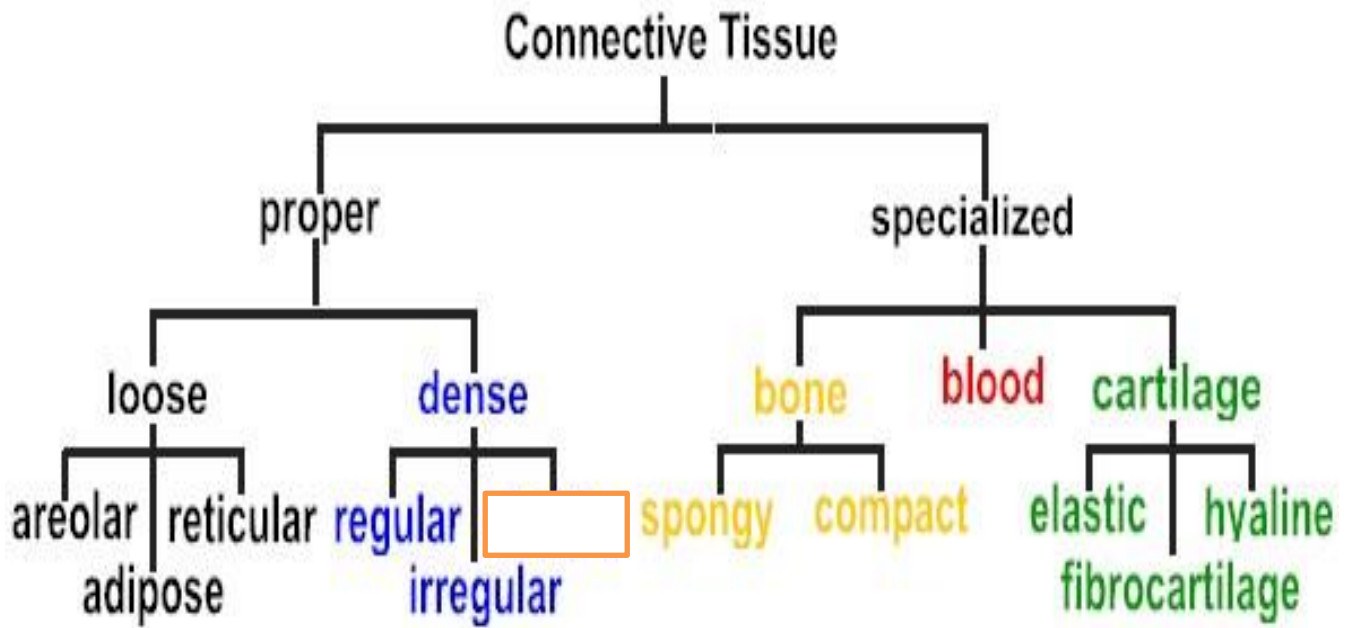
b. dense connective tissue

- regular 
 - Elastic connective tissue**
 - White fibrous connective tissue**
- irregular

2. Supporting connective tissue

a. cartilage

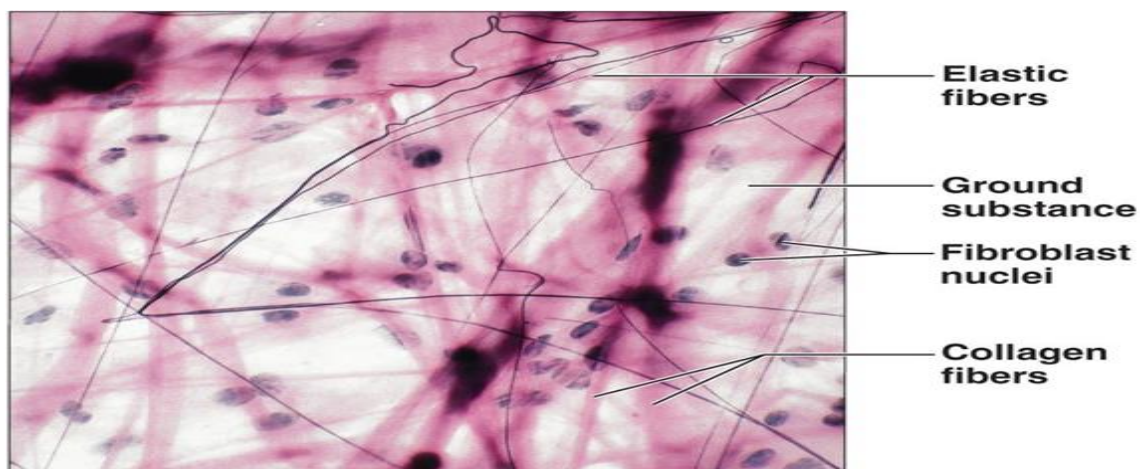
b. bone tissue



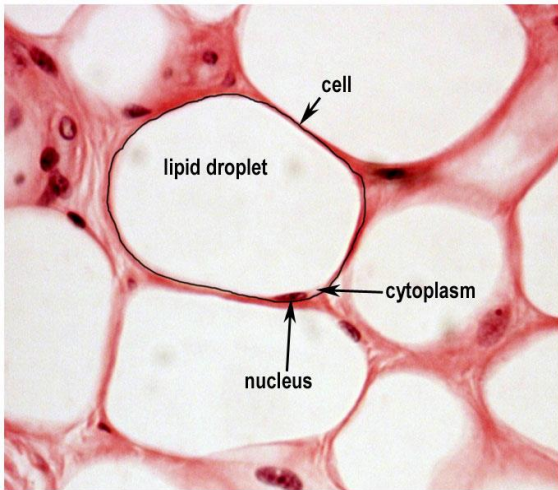
Loose Connective Tissue

. Types:

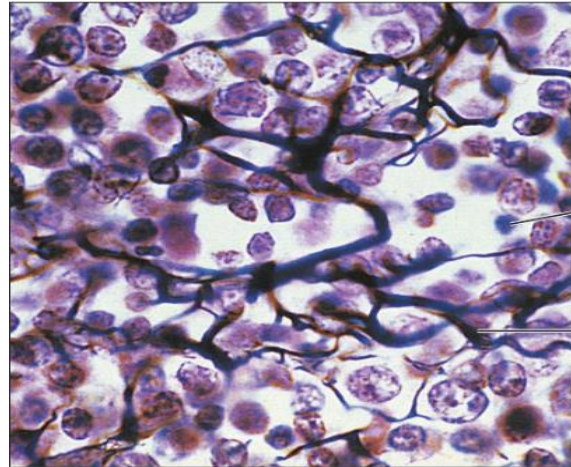
- a- **Areolar**
- b- **Adipose** → Located under the skin
- c- **Reticular** → Located in bone marrow



Areolar



Adipose

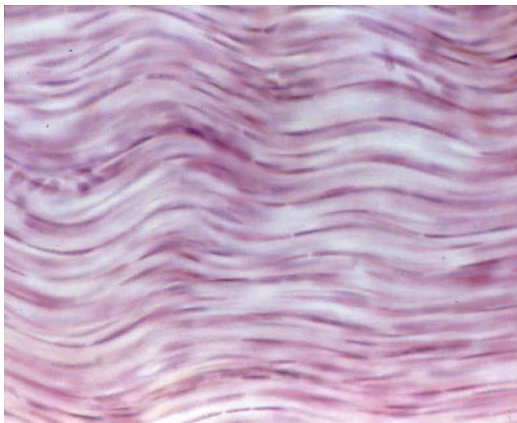


Reticular

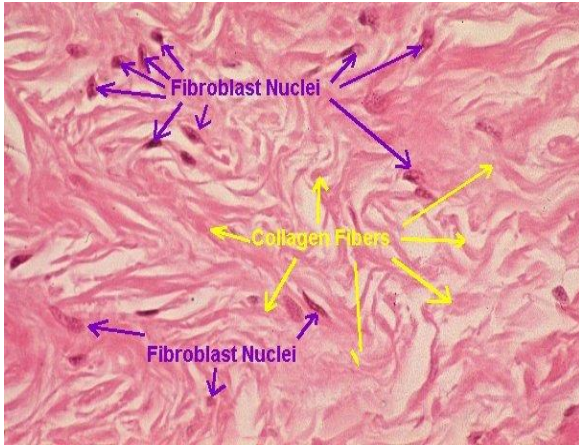
Dense Connective Tissue

Types:

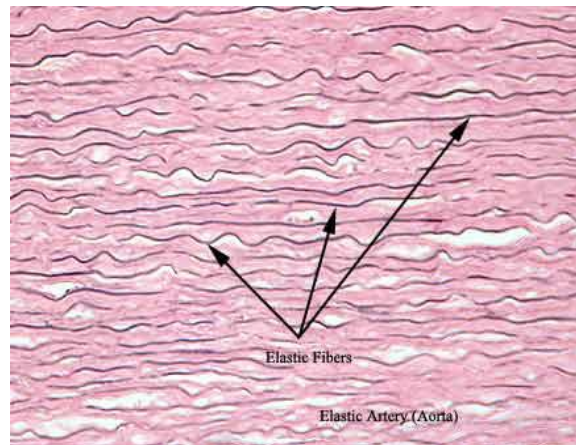
- a- **White fibrous connective tissue**
- b- **Elastic connective tissue**



Dense (Fibrous) Regular Connective Tissue



Irregular Connective Tissue



Elastic Connective Tissue