

Moniezia expansa

Class: Cestoda

Family: Anoplocephalidae.

Final host: Sheep, goats, occasionally cattle.

Second host: Forage mites, mainly of the family Oribatidae

Predilection site: small intestine.

Description, gross:

These are long tapeworm, 2m or more in length, which are unarmed, possessing prominent suckers.

Description, microscopic:

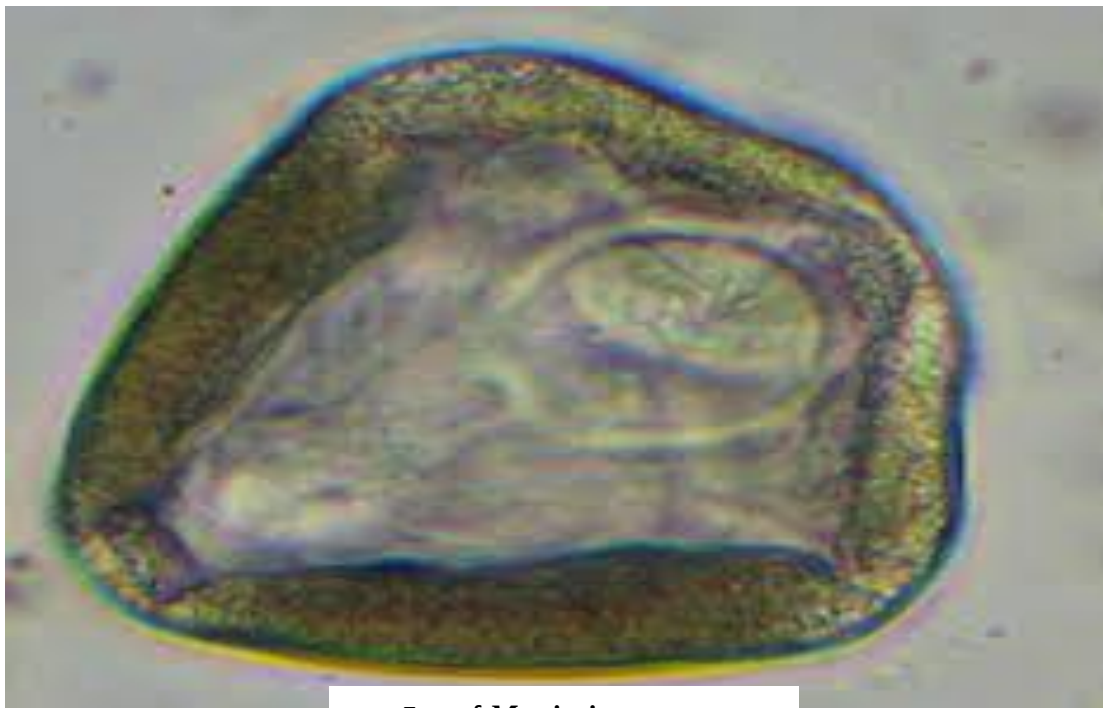
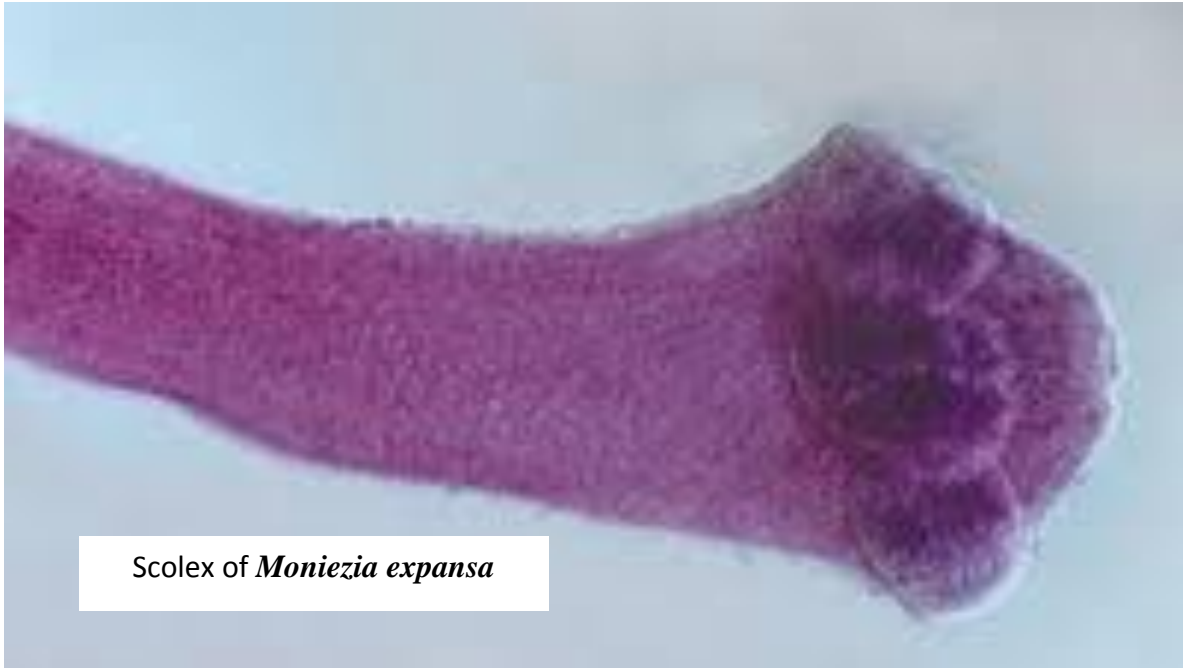
Segments are broader than they are long (up to 1.5cm wide) and contain two sets of genital organs grossly visible along the lateral margin of each segment. There is a row of interproglottid glands at the posterior border of each segment, which may be used in species differentiation.

The eggs: the irregularly triangular eggs have a well-defined pyriform apparatus and 55-75µm in diameter.

Diagnosis:

This is based largely on the presence of mature proglottids in the faeces and the characteristic shape of *Moniezia* eggs that contain oncosphere.

Cestodes
Lab8



Raillietina tetragona

Class: Cestoda

Family: Davaineidae

Final host: chicken, guinea fowl and pigeon.

Second host: Ants

Predilection site: posterior half of small intestine.

Description, gross:

A large tapeworm 20-30 cm in length. the scolex is small.

Description, microscopic:

The oval suckers are armed and the rostellum bears one or two rows of hooks. The gravid segment contain multiple fibrous-walled eggs capsules, each housing many eggs *Raillietina tetragona* has a large number of egg capsules in the gravid segment than other *Raillietina spp.* Eggs measure approximately 65×90µm.

Diagnosis:

This is best achieved at necropsy through microscopic examination of mucosal scrapings from the small intestine.

Cestodes
Lab8

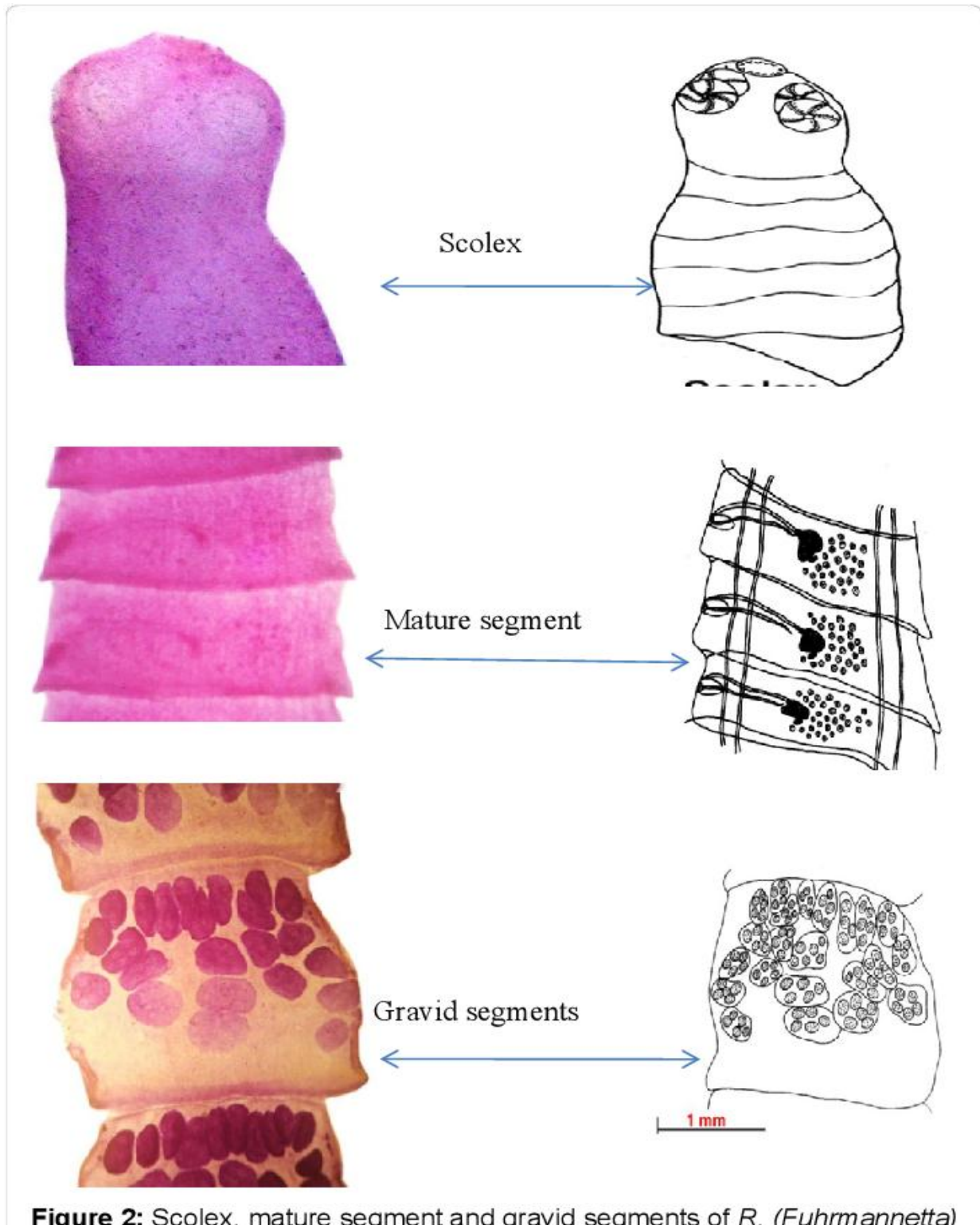


Figure 2: Scolex. mature segment and gravid segments of *R. (Fuhrmannetta)*

Hymenolepis nana

Synonym: *Rodentolepis nana*

Class: Cestoda

Family: Hymenolepididae.

Common name: dwarf tapeworm

Final host: Rat, mouse, birds, man.

Second host: flour beetles or fleas.

Predilection site: small intestine.

Description, gross:

The tapeworm is small, 2.5-4 cm in length and has a characteristically slender strobili with about 200 segments.

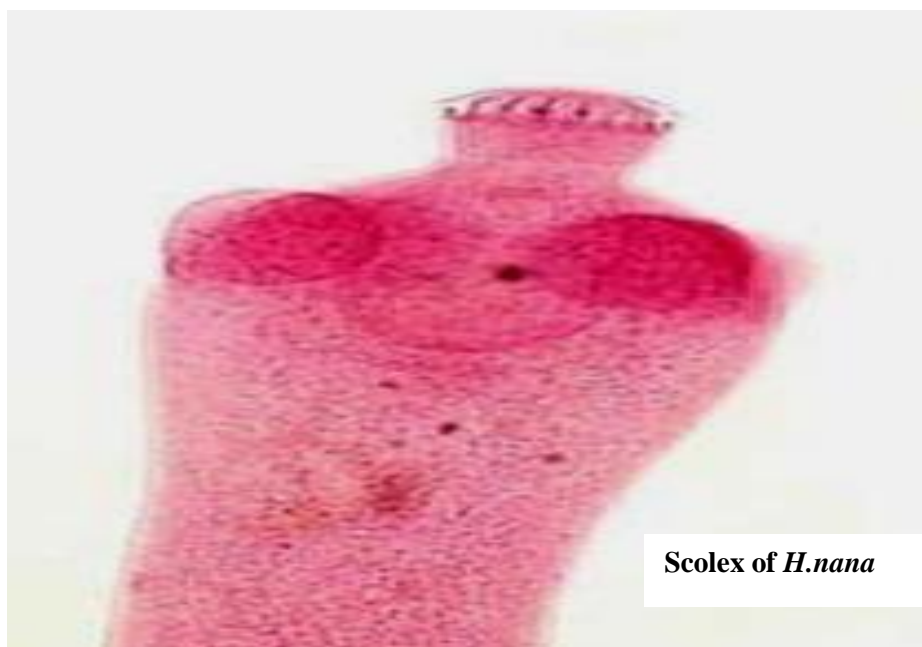
Description, microscopic:

The scolex has four suckers and is armed with a retractable rostellum bearing a single row of 20-30 hooks. The genitalia are single and the segments are wider than they are long.

Eggs : the eggs are small, round or oval in shape, 44-62×30-55µm, and contain a lemon-shaped embryophore with protruding polar plugs and an embryo with three small hooks.

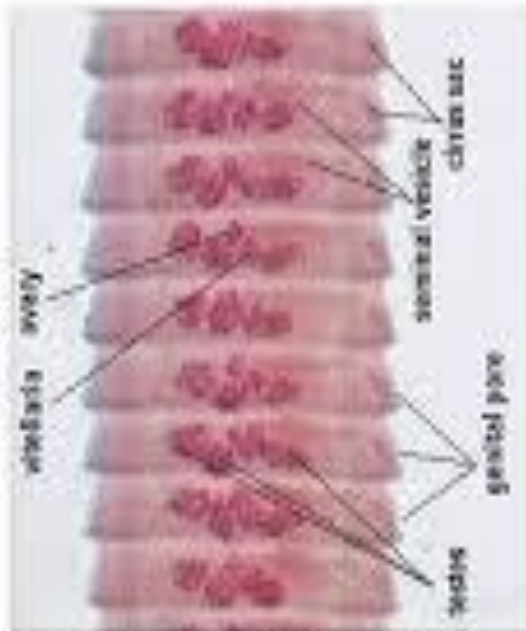
Diagnosis:

Identification of the eggs in faeces or the adult worms in the small intestine.



Scolex of *H.nana*

Hymenolepis nana



Mature segments: broad than long characterized by 3 testis and one ovary in each segment (L.P)

Gravid segments : broad than long, enlarged uterus containing eggs (L.P)

Morphology of *H.nana*

